

Which adult do you spend most of the time talking to or doing stuff with at the service?

We'll call this person your worker.

What is the nicest thing that your worker has done for you?

Can you think of anything that your worker could do to be better at her or his job?

What would make it easier for children and young people to be taken care of here?

What would make it easier for children and young people to be listened to here?

How helpful is your worker?

Not much

A little bit

A bit

A fair bit

Very much

How interested are they in the things you like to do?

Not much

A little bit

A bit

A fair bit

Very much

How well do they take care of you here?

Not much

A little bit

A bit

A fair bit

Very much

How well do they take care of your family here?

Not much

A little bit

A bit

A fair bit

Very much

How well do they listen to you here?

Not much

A little bit

A bit

A fair bit

Very much

How well do they listen to your family here?

Not much

A little bit

A bit

A fair bit

Very much



EXPERIENCE
OF PLACE

What would you tell other children and young people about the things you like about this place?

What would you tell other children and young people about the things you don't like about this place?

What would make this place better for children or young people?

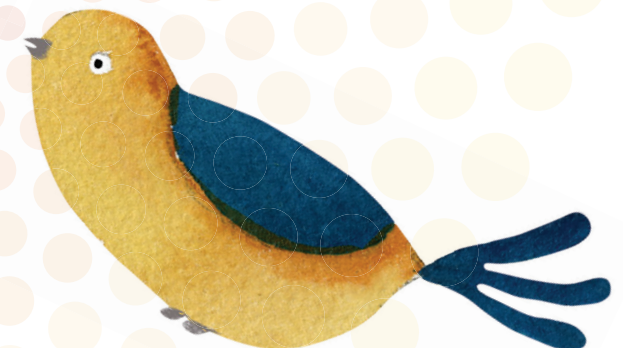


Do you feel like this place is a good place for children to come to?

Not much A little bit A bit A fair bit Very much

How child friendly is this place?

Not much A little bit A bit A fair bit Very much





EXPERIENCE
OF CHANGE

Since coming here, has anything
changed for you?

If so, what things have changed?

Since coming here, what things **haven't
changed for you** that you would have
liked to have changed?

Since coming here, has anything
changed for your family?

If so, what things have changed?

Since coming here, what things **haven't
changed for your family** that you would
have liked to have changed?





EXPERIENCE OF
CULTURAL IDENTITY



Have you learned anything new about your culture since coming here?

If yes, what have you learned?

Could this service do anything to be better for children and families who are from your culture?

If yes, can you share any ideas?

Do you feel like you are welcome here?

How come?

Is your worker interested in who you are as a person?

What makes you think this?

Do you get to talk with your worker about where your family is from?

Not much

A little bit

A bit

A fair bit

Very much

Does your worker show interest in your people?

Not much

A little bit

A bit

A fair bit

Very much

Do you talk with your worker about your aboriginality?

Not much

A little bit

A bit

A fair bit

Very much

Do you think other aboriginal kids would feel safe coming here?

Not much

A little bit

A bit

A fair bit

Very much



Would you like your worker to understand more about your cultural background?

If so, what should she/he understand?

Could this service do anything to be better for children and families from your cultural background?

If yes, can you share any ideas?

Is your worker interested in who you are as a person?

What makes you think this?

Do you feel like you are welcome here?

How come?



Does this service help you feel like you belong here?

Not much A little bit A bit A fair bit Very much

Do you feel like you can learn more about your history and culture with your worker?

Not much A little bit A bit A fair bit Very much





What do you know about what this service does?

How did you find this out?

Can you tell me what your worker's job is with children and young people?

How did you find this out?

Did your worker explain to you when they would have to tell someone else about what you said to them?

If you're not happy with something that your worker says or does, what do you think you can do?

If you don't agree with something, how much of a chance are you given to speak up?

Not much A little bit A bit A fair bit Very much

How much do you feel like you are able to say everything that is important to you?

Not much A little bit A bit A fair bit Very much